

SAMA Monthly

SEPTEMBER 2015

ISSUE 59

Student
OF THE
MONTH



GIANCARLO F.

Congratulations to SAMA guitar student Gian! A student of Jake Ramirez, Gian has made a lot of progress over the summer. Jake says, "Gian has been playing scales faster with a metronome each week, and has finally progressed to college level repertoire on classical guitar."

Instructor Corner

How to Count in Music



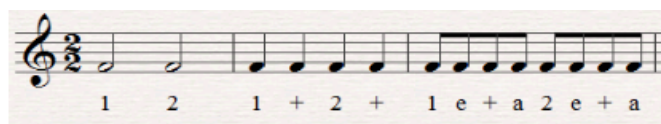
Music is math. Music is set to a meter, a predetermined count of time.

As a musician, each one of us controls time and space with sound. But in order to play music properly, we all must have a rudimentary understanding of what meter is and how we must count our beats. Without

this understanding our music would make no sense to our listeners.

The meter (time signature) is given at the beginning of every piece of music. It is stated by the two numbers that sit atop of one another after our clef sign. We all know that the top number represents the amount of beats we will have within a measure. But, what is often forgotten is what that bottom number means. Too many times I have asked this question only to be met with a vacant stare and a reply of, "I don't know". This is a fundamental principal that our music is written around and that everyone who aspires to be a musician should understand.

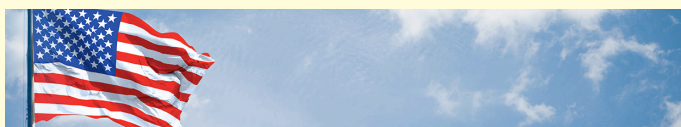
The bottom number represents which note value we are going to be counting as our beat. Once we know what we are counting as our beat, we should be able to divide (first break down) and subdivide (second break down) our beats properly. Ex. In 2/2 time.



Just remember that all the beats can be added up within a measure and that each beat can also be broken down (divided and subdivided) into parts. The first measure in the example shows the beat before it is broken down. The second measure shows the first division of the beat while the third measure shows the second division of the beat.

As with any example it is always good to count it out loud and clap it as you say the rhythm. Have your instructor show you how to do it. Just remember to keep a steady beat and keep counting.

-Tom Sprayberry
SAMA Guitar Instructor



Labor Day

SAMA will be open on Monday, September 7th.



/sanantoniomusicacademy



/samusicacademy



/samusicacademy